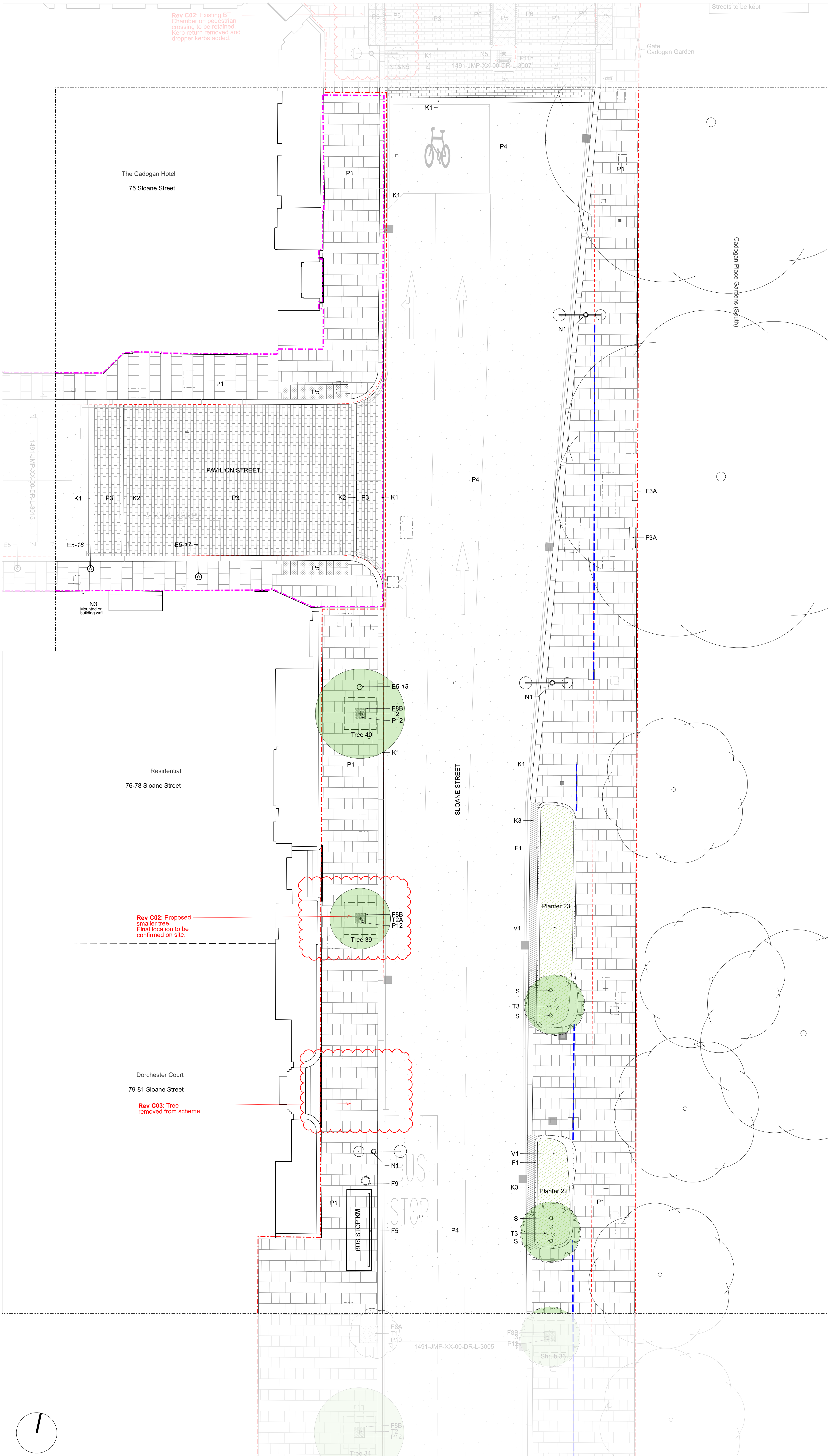


Rev C02: Existing BT Chamber on pedestrian crossing to be retained. Kerb return removed and dropper kerbs added.



Rev C02: Proposed smaller tree. Final location to be confirmed on site.

Rev C03: Tree removed from scheme

CADOGAN
GT GARDINER & THEOBALD JOHN MCASLAN + PARTNERS
ANDYSTURGEONDESIGN **lapd** **wsp**

Notes

1. Refer to WSP consultants drawings for highway street furniture, visibility splays, parking restrictions, drainage layout and other engineering details.
2. Refer to LAPD consultants drawings for street lighting strategy.
3. Refer to ASD consultants drawings for planting design drawings.
4. Do not scale from this drawing.
5. All dimensions are to be checked on site and any discrepancies noted in writing to the Project Manager.
6. All dimensions are in millimeters unless noted otherwise.

Rev.	Date	Description	Drawn	Checked
C01	14/10/2022	STAGE 5: FOR CONSTRUCTION	DO	KB
C02	19/12/2022	STAGE 5: FOR CONSTRUCTION	DO	KB
C03	31/03/2023	STAGE 5: FOR CONSTRUCTION	DO	KB

KEY

- Site boundary
- Scope delivered outside main works
- Scope awaiting further input
- Early work
- Existing kerb line
- Doors/Steps

SURFACES

	REFER TO
P1 - Yorkstone flags Type 1 - 63mm	Plan DRN-1100 to DRN-1316 Date: DRN-4202 to DRN-4205 Date: DRN-4207
P2 - Yorkstone tiles	Plan DRN-1100 to DRN-1316 Date: DRN-4202
P3 - Granite setts	Plan DRN-1100 to DRN-1316 Date: DRN-4202 to DRN-4203
P4 - Vehicular grade asphalt	WSP Drawings
P5 - Tactile paving	Plan DRN-1200 to DRN-1316 Date: DRN-4202
P6 - Granite setts	Plan DRN-1100 to DRN-1316 Date: DRN-4202
P7 - Yorkstone flags Type 2 - 25mm	Plan DRN-1100 to DRN-1316 Date: DRN-4202
P8 - Lustrate finish to be retained	Plan DRN-1100 to DRN-1316
P10 - Resin bound gravel	Plan DRN-1100 to DRN-1316 Date: DRN-4202 to DRN-4203 Date: DRN-4205 to DRN-4206 Date: DRN-4208 to DRN-4209
P11a - Yorkstone setts	
P11b - Yorkstone setts - tumbled	
P12 - Loose gravel	
K1 - Granite kerb type 1	Plan DRN-1100 to DRN-1316 WSP Drawing to be used
K2 - Granite kerb type 2	Plan DRN-1100 to DRN-1316 WSP Drawing to be used
K3 - Special granite kerbs (sizes vary)	Plan DRN-1100 to DRN-1316 Date: DRN-4202 to DRN-4210

FURNITURE

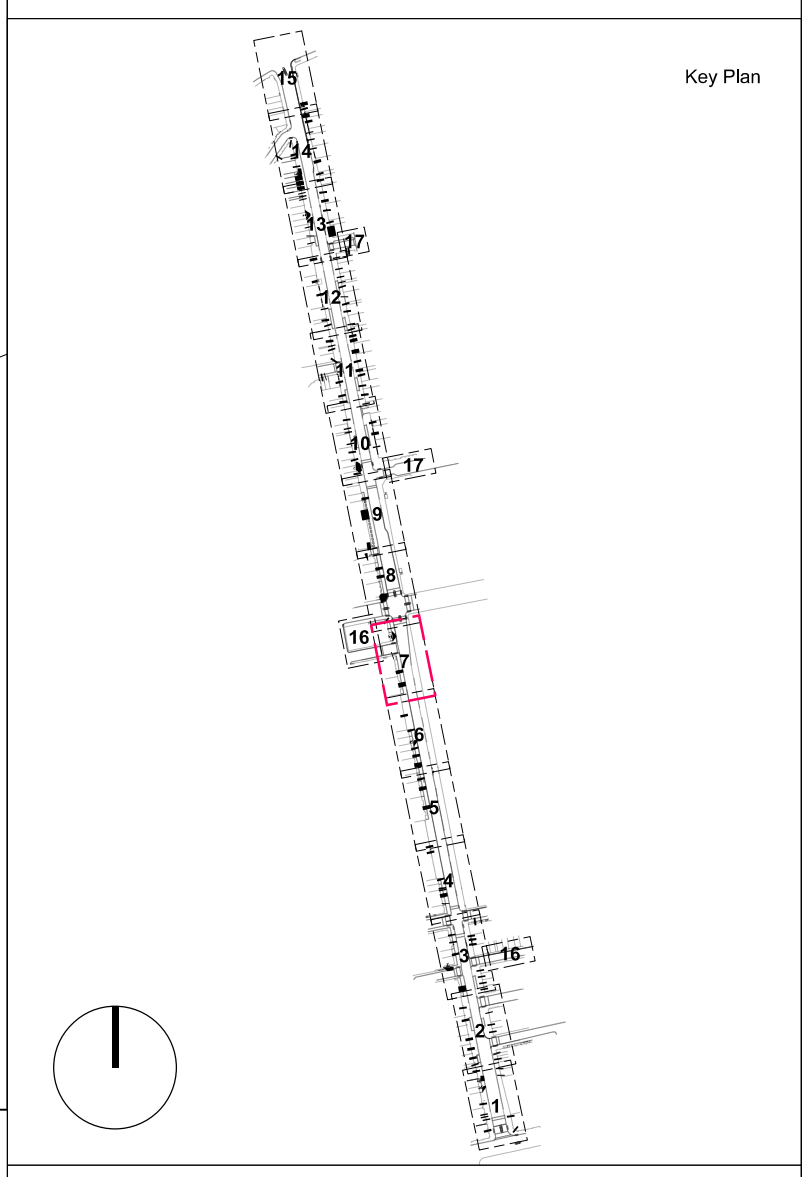
	REFER TO
F1 - Granite planter with integrated seating Types 1,2,4,5,6,7,8,9,10	Plan DRN-1100 to DRN-1316 Date: DRN-4202 to DRN-4216 Date: DRN-4208 to DRN-4209
F2 - Granite planter Type 3	Plan DRN-1100 to DRN-1316 Date: DRN-4202 to DRN-4203
F3A and F3B - Retained cabinets	WSP Drawings
F4 - Restored telephone box	WSP Drawings
F5 - Retained bus shelter	WSP Drawings
F6 - Bike stands	Plan DRN-1100 to DRN-1316 Date: DRN-4202
F7 - Retained Post box	Plan DRN-1100 to DRN-1316 Date: DRN-4202
F8A - Tree pit surround, filled with resin bound gravel - Existing Tree - Setout to be checked on site	Plan DRN-1100 to DRN-1316 Date: DRN-4202
F8B - Tree pit surround, filled with loose gravel - Proposed Tree	Plan DRN-1100 to DRN-1316 Date: DRN-4202 to DRN-4203 Date: DRN-4205 to DRN-4206 Date: DRN-4208 to DRN-4209
F9 - Proposed bins	Plan DRN-1100 to DRN-1316 Date: DRN-4202
F10 - Drinking fountain (F10a and F10b)	Plan DRN-1100 to DRN-1316 Date: DRN-4202 to DRN-4203
F11 - Existing BT Inlink unit to be reinstated	Plan DRN-1100 to DRN-1316 Date: DRN-4202, DRN-4203
F12 - Proposed Pots positioned above Paving	Plan DRN-1100 to DRN-1316 Date: DRN-4202
F13 - Legible London Refurbished & Reinstated	Plan DRN-1100 to DRN-1316
F14 - Historic Bollards Refurbished & Reinstated	Plan DRN-1100 to DRN-1316 Date: DRN-4202
F15 - Bell Bollard - Refurbished & Reinstated	Plan DRN-1100 to DRN-1316 Date: DRN-4202
E4A - Demarcation studs - Private/Public Boundary* and Smoke outlets**	Plan DRN-1100 to DRN-1316 Date: DRN-4202
E4B - Extent of Smoke Outlets Panels	Plan DRN-1100 to DRN-1316 Date: DRN-4202
E4C - Bronze Smoke Vent Plaque	Plan DRN-1100 to DRN-1316 Date: DRN-4202
E5 - Coal Hole Lid Refurbished & Reinstated	Plan DRN-1100 to DRN-1316 Date: DRN-4202

SOFT LANDSCAPE

	REFER TO
V1 - Ornamental planting and hedges	ASD Drawings Date: DRN-1100 to DRN-1316 Date: DRN-4202 to DRN-4203 Date: DRN-4205 to DRN-4206 Date: DRN-4208 to DRN-4209
T1 - Existing tree	Plan DRN-1100 to DRN-1316 Date: DRN-4202
T2 - Proposed single stem tree	ASD Drawings
T2A - Proposed single stem tree (smaller size)	ASD Drawings
T3 - Proposed multi stem tree	ASD Drawings
T4 - Proposed multi stem tree	ASD Drawings

LIGHTING

	REFER TO
N1 - Column luminaire	LAPD Drawings Date: DRN-4211
N2 and N4 - Column luminaire with belisha beacon	LAPD Drawings Date: DRN-4211
N3 - Existing lighting column to be retained	LAPD Drawings
N5 - Traffic light	WSP Drawings
S - In-ground luminaire	LAPD Drawings



JOHN MCASLAN + PARTNERS
 7-9 William Road
 London NW11 3ER
 T +44 (0)20 7313 6000
 F +44 (0)20 7313 6001
 www.mcaslan.co.uk

Architect
 Landscape

SLOANE STREET PUBLIC REALM
General Arrangement Plan 07

Scale A1 A1: 1:100 @ A1 Job Number: 1491
 Date: 25/06/2021 Drawing: DO
 Drawing Status: S5 Checked: KB
 Drawing Number: 1491-JMP-XX-00-DR-L-3006 Revision: C03