

Notes
 1. Refer to WSP consultants drawings for highway street furniture, visibility splays, parking restrictions, drainage layout and other engineering details.
 2. Refer to LAPD consultants drawings for street lighting strategy.
 3. Refer to ASD consultants drawings for planting design drawings.
 4. Do not scale from this drawing.
 5. All dimensions are to be checked on site and any discrepancies noted in writing to the Project Manager.
 6. All dimensions are in millimeters unless noted otherwise.

Rev.	Date	Description	Drawn	Checked
C01	14/10/2022	STAGE 5: FOR CONSTRUCTION	DO	KB
C02	31/03/2023	STAGE 5: FOR CONSTRUCTION	DO	KB

KEY

- Site boundary
- Scope delivered outside main works
- Scope awaiting further input
- Early work
- Existing kerb line
- Doors/Steps

SURFACES

Code	Description	REFER TO
P1	Yorkstone flags Type 1 - 63mm	Plan DRN-1000 to DRN-1010, Dwg DRN-4000 to DRN-4010, DRN-4010 to DRN-4020
P2	Yorkstone tiles	Plan DRN-1000 to DRN-1010, Dwg DRN-4000 to DRN-4010
P3	Granite setts	Plan DRN-1000 to DRN-1010, Dwg DRN-4000 to DRN-4010
P4	Vehicular grade asphalt	WSP Drawings
P5	Tactile paving	Plan DRN-1000 to DRN-1010, Dwg DRN-4000 to DRN-4010
P6	Granite setts	Plan DRN-1000 to DRN-1010, Dwg DRN-4000 to DRN-4010
P7	Yorkstone flags Type 2 - 25mm	Plan DRN-1000 to DRN-1010, Dwg DRN-4000 to DRN-4010
P8	Luxcrete finish to be retained	Plan DRN-1000 to DRN-1010, Dwg DRN-4000 to DRN-4010
P10	Resin bound gravel	Plan DRN-1000 to DRN-1010, Dwg DRN-4000 to DRN-4010, Dwg DRN-4010 to DRN-4020
P11a	Yorkstone setts	
P11b	Yorkstone setts - tumbled	
P12	Loose gravel	
K1	Granite kerb type 1	Plan DRN-1000 to DRN-1010, Dwg DRN-4000 to DRN-4010
K2	Granite kerb type 2	Plan DRN-1000 to DRN-1010, Dwg DRN-4000 to DRN-4010
K3	Special granite kerbs (sizes vary)	Plan DRN-1000 to DRN-1010, Dwg DRN-4000 to DRN-4010

FURNITURE

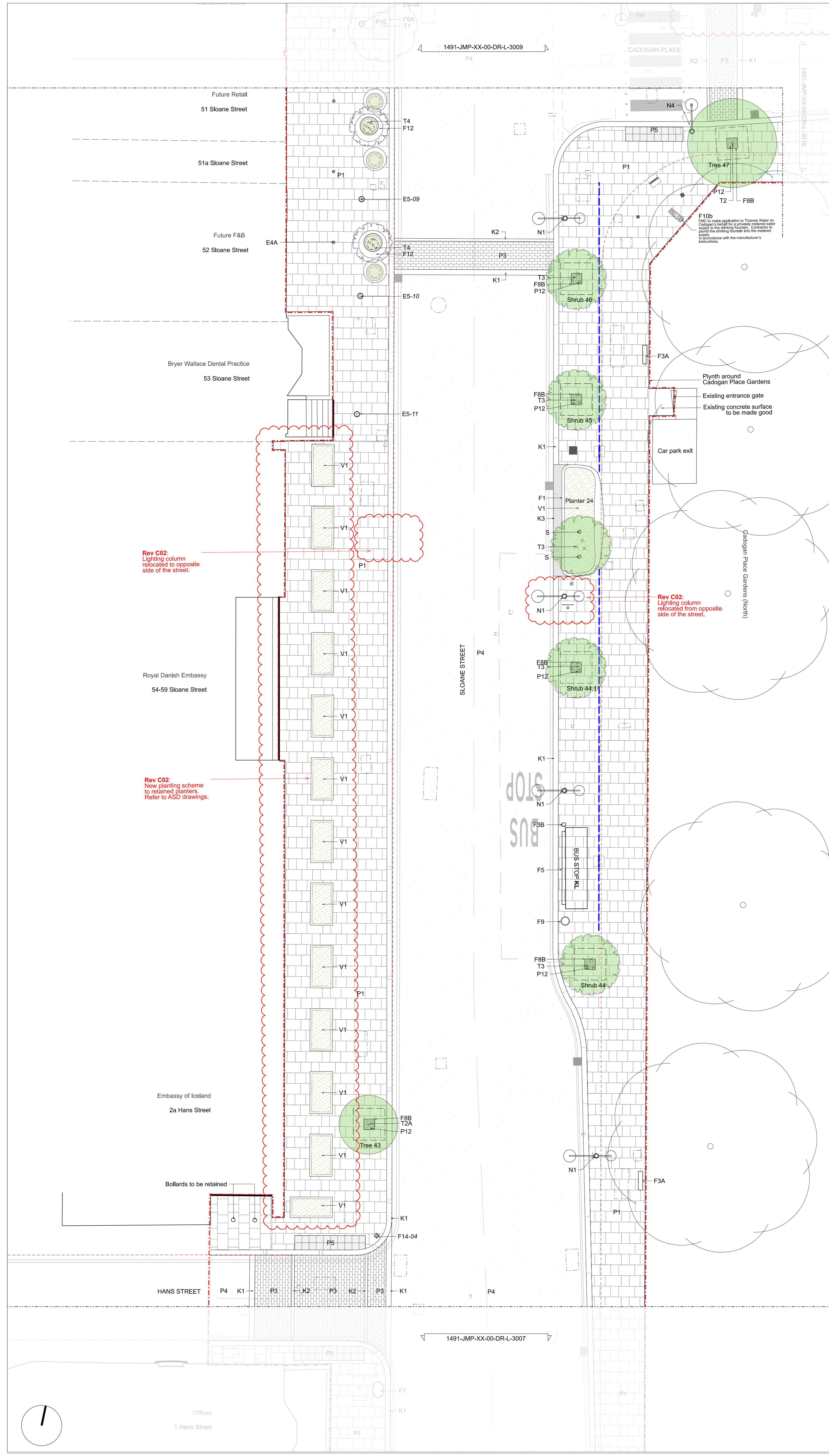
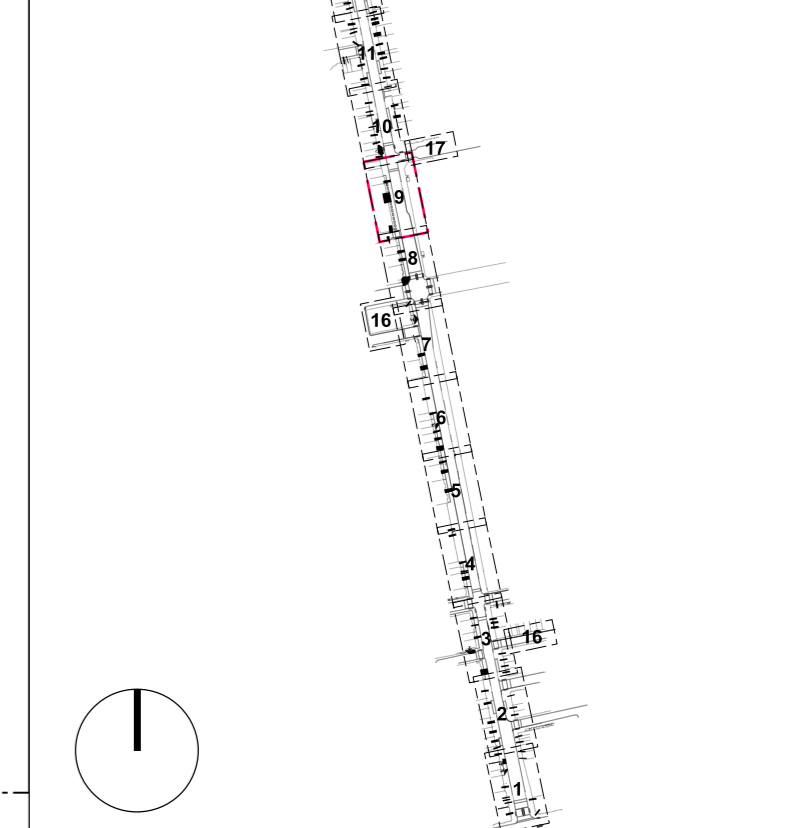
Code	Description	REFER TO
F1	Granite planter with integrated seating Types 1,2,4,5,6,7,8,9,10	Plan DRN-1000 to DRN-1010, Dwg DRN-4000 to DRN-4010, Dwg DRN-4010 to DRN-4020
F2	Granite planter Type 3	Plan DRN-1000 to DRN-1010, Dwg DRN-4000 to DRN-4010
F3A and F3B	Retained cabinets	WSP Drawings
F4	Restored telephone box	WSP Drawings
F5	Retained bus shelter	WSP Drawings
F6	Bike stands	Plan DRN-1000 to DRN-1010, Dwg DRN-4000 to DRN-4010
F7	Retained Post box	Plan DRN-1000 to DRN-1010, Dwg DRN-4000 to DRN-4010
F8A	Tree pit surround, filled with resin bound gravel - Existing Tree - Setout to be checked on site	Plan DRN-1000 to DRN-1010, Dwg DRN-4000 to DRN-4010
F8B	Tree pit surround, filled with loose gravel - Proposed Tree	Plan DRN-1000 to DRN-1010, Dwg DRN-4000 to DRN-4010
F9	Proposed bins	Plan DRN-1000 to DRN-1010, Dwg DRN-4000 to DRN-4010
F10	Drinking fountain (F10a and F10b)	Plan DRN-1000 to DRN-1010, Dwg DRN-4000 to DRN-4010
F11	Existing BT Inlink unit to be reinstated	Plan DRN-1000 to DRN-1010, Dwg DRN-4000 to DRN-4010
F12	Proposed Pots positioned above Paving	Plan DRN-1000 to DRN-1010, Dwg DRN-4000 to DRN-4010
F13	Legible London Refurbished & Reinstated	Plan DRN-1000 to DRN-1010, Dwg DRN-4000 to DRN-4010
F14	Historic Bollards Refurbished & Reinstated	Plan DRN-1000 to DRN-1010, Dwg DRN-4000 to DRN-4010
F15	Bell Bollard - Refurbished & Reinstated	Plan DRN-1000 to DRN-1010, Dwg DRN-4000 to DRN-4010
E4A	Demarcation studs - Private/Public Boundary* and Smoke outlets**	Plan DRN-1000 to DRN-1010, Dwg DRN-4000 to DRN-4010
E4B	Extent of Smoke Outlets Panels	Plan DRN-1000 to DRN-1010, Dwg DRN-4000 to DRN-4010
E4C	Bronze Smoke Vent Plaque	Plan DRN-1000 to DRN-1010, Dwg DRN-4000 to DRN-4010
E5	Coal Hole Lid Refurbished & Reinstated	Plan DRN-1000 to DRN-1010, Dwg DRN-4000 to DRN-4010
	Proposed road signage	WSP Drawings
	Access covers / Road gully / Proposed gully / catch pit	WSP Drawings

SOFT LANDSCAPE

Code	Description	REFER TO
V1	Ornamental planting and hedges	ASD Drawings
T1	Existing tree	Plan DRN-1000 to DRN-1010, Dwg DRN-4000 to DRN-4010
T2	Proposed single stem tree	ASD Drawings
T2A	Proposed single stem tree (smaller size)	ASD Drawings
T3	Proposed multi stem tree	ASD Drawings
T4	Proposed multi stem tree	ASD Drawings

LIGHTING

Code	Description	REFER TO
N1	Column luminaire	LAPD Drawings, Dwg DRN-4011
N2 and N4	Column luminaire with belisha beacon	LAPD Drawings, Dwg DRN-4011
N3	Existing lighting column to be retained	LAPD Drawings
N5	Traffic light	WSP Drawings
S	In-ground luminaire	LAPD Drawings



Rev C02: Lighting column relocated to opposite side of the street.

Rev C02: New planting scheme to retained planters. Refer to ASD drawings.

Rev C02: Lighting column relocated from opposite side of the street.