



Notes

1. Refer to WSP consultants drawings for highway street furniture, visibility splays, parking restrictions, drainage layout and other engineering details.
2. Refer to LAPD consultants drawings for street lighting strategy.
3. Refer to ASD consultants drawings for planting design drawings.
4. Do not scale from this drawing.
5. All dimensions are to be checked on site and any discrepancies noted in writing to the Project Manager.
6. All dimensions are in millimeters unless noted otherwise.

Rev.	Date	Description	Drawn	Checked
C01	14/10/2022	STAGE 5: FOR CONSTRUCTION	DO	KB
C02	31/03/2023	STAGE 5: FOR CONSTRUCTION	DO	KB

KEY

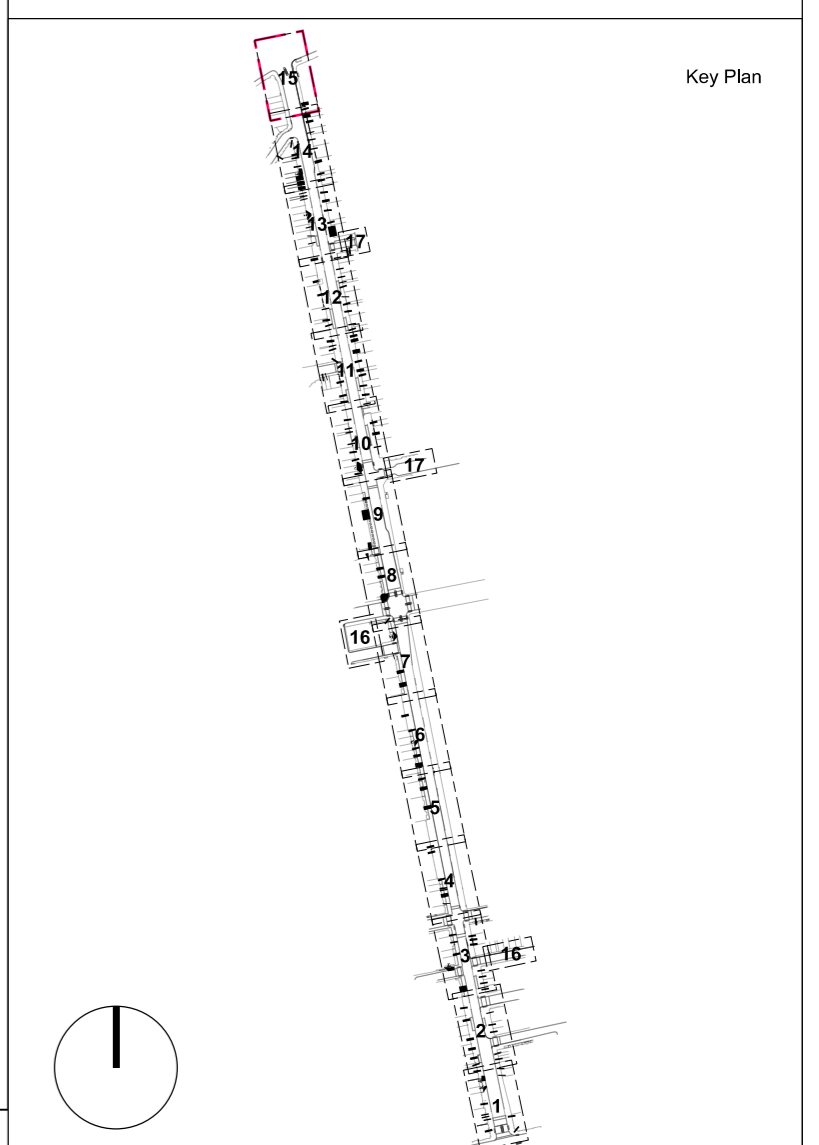
- Site boundary
- Scope delivered outside main works
- Scope awaiting further input
- Early work
- Existing kerb line
- Doors/Steps

SURFACES	REFER TO
P1 - Yorkstone flags Type 1 - 63mm	Plan: DR4-1100 to DR4-1110 Cont: DR4-4000 to DR4-4010 DR4-4010 to DR4-4020
P2 - Yorkstone tiles	Plan: DR4-1100 to DR4-1110 DR4-4000 to DR4-4010
P3 - Granite setts	Plan: DR4-1100 to DR4-1110 DR4-4000 to DR4-4010
P4 - Vehicular grade asphalt	WSP Drawings
P5 - Tactile paving	Plan: DR4-1100 to DR4-1110 DR4-4000 to DR4-4010
P6 - Granite setts	Plan: DR4-1100 to DR4-1110 DR4-4000 to DR4-4010
P7 - Yorkstone flags Type 2 - 25mm	Plan: DR4-1100 to DR4-1110 DR4-4000 to DR4-4010
P8 - Luxcrete finish to be retained	Plan: DR4-1100 to DR4-1110
P10 - Resin bound gravel	Plan: DR4-1100 to DR4-1110 Cont: DR4-4000 to DR4-4010 DR4-4010 to DR4-4020
P11a - Yorkstone setts	
P11b - Yorkstone setts - tumbled	
P12 - Loose gravel	
K1 - Granite kerb type 1	Plan: DR4-1100 to DR4-1110 WSP Drawings to detail
K2 - Granite kerb type 2	Plan: DR4-1100 to DR4-1110 WSP Drawings to detail
K3 - Special granite kerbs (sizes vary)	Plan: DR4-1100 to DR4-1110 DR4-4000 to DR4-4010
Road Markings	WSP Drawings

FURNITURE	REFER TO
F1 - Granite planter with integrated seating Types 1,2,4,5,6,7,8,9,10	Plan: DR4-1100 to DR4-1110 Cont: DR4-4000 to DR4-4010 DR4-4010 to DR4-4020
F2 - Granite planter Type 3	Plan: DR4-1100 to DR4-1110 DR4-4000 to DR4-4010
F3A and F3B - Retained cabinets	WSP Drawings
F4 - Restored telephone box	WSP Drawings
F5 - Retained bus shelter	WSP Drawings
F6 - Bike stands	Plan: DR4-1100 to DR4-1110 DR4-4000 to DR4-4010
F7 - Retained Post box	Plan: DR4-1100 to DR4-1110 DR4-4000 to DR4-4010
F8A - Tree pit surround, filled with resin bound gravel - Existing Tree - Setout to be checked on site	Plan: DR4-1100 to DR4-1110 DR4-4000 to DR4-4010
F8B - Tree pit surround, filled with loose gravel - Proposed Tree	Plan: DR4-1100 to DR4-1110 DR4-4000 to DR4-4010
F9 - Proposed bins	Plan: DR4-1100 to DR4-1110 DR4-4000 to DR4-4010
F10 - Drinking fountain (F10a and F10b)	Plan: DR4-1100 to DR4-1110 DR4-4000 to DR4-4010
F11 - Existing BT Inlink unit to be reinstated	Plan: DR4-1100 to DR4-1110 DR4-4000 to DR4-4010
F12 - Proposed Pots positioned above Paving	Plan: DR4-1100 to DR4-1110 DR4-4000 to DR4-4010
F13 - Legible London Refurbished & Reinstated	Plan: DR4-1100 to DR4-1110
F14 - Historic Bollards Refurbished & Reinstated	Plan: DR4-1100 to DR4-1110
F15 - Bell Bollard - Refurbished & Reinstated	Plan: DR4-1100 to DR4-1110
E4A - Demarcation studs - Private/Public Boundary* and Smoke outlets**	Plan: DR4-1100 to DR4-1110 DR4-4000 to DR4-4010
E4B - Extent of Smoke Outlets Panels	Plan: DR4-1100 to DR4-1110 DR4-4000 to DR4-4010
E4C - Bronze Smoke Vent Plaque	Plan: DR4-1100 to DR4-1110 DR4-4000 to DR4-4010
E5 - Coal Hole Lid Refurbished & Reinstated	Plan: DR4-1100 to DR4-1110 DR4-4000 to DR4-4010
Proposed road signage	WSP Drawings
Proposed hoops	WSP Drawings
Access covers / Road gully / Proposed gully / catch pit	WSP Drawings

SOFT LANDSCAPE	REFER TO
V1 - Ornamental planting and hedges	ASD Drawings DR4-1100 to DR4-1110 DR4-4000 to DR4-4010
T1 - Existing tree	Plan: DR4-1100 to DR4-1110 DR4-4000 to DR4-4010
T2 - Proposed single stem tree	ASD Drawings
T2A - Proposed single stem tree (smaller size)	ASD Drawings
T3 - Proposed multi stem tree	ASD Drawings
T4 - Proposed multi stem tree	ASD Drawings

LIGHTING	REFER TO
N1 - Column luminaire	LAPD Drawings DR4-1100 to DR4-1110
N2 and N4 - Column luminaire with belisha beacon	LAPD Drawings DR4-1100 to DR4-1110
N3 - Existing lighting column to be retained	LAPD Drawings
N5 - Traffic light	WSP Drawings
S - In-ground luminaire	LAPD Drawings

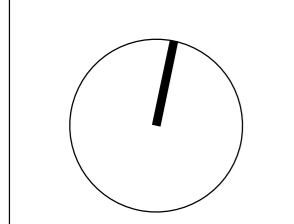
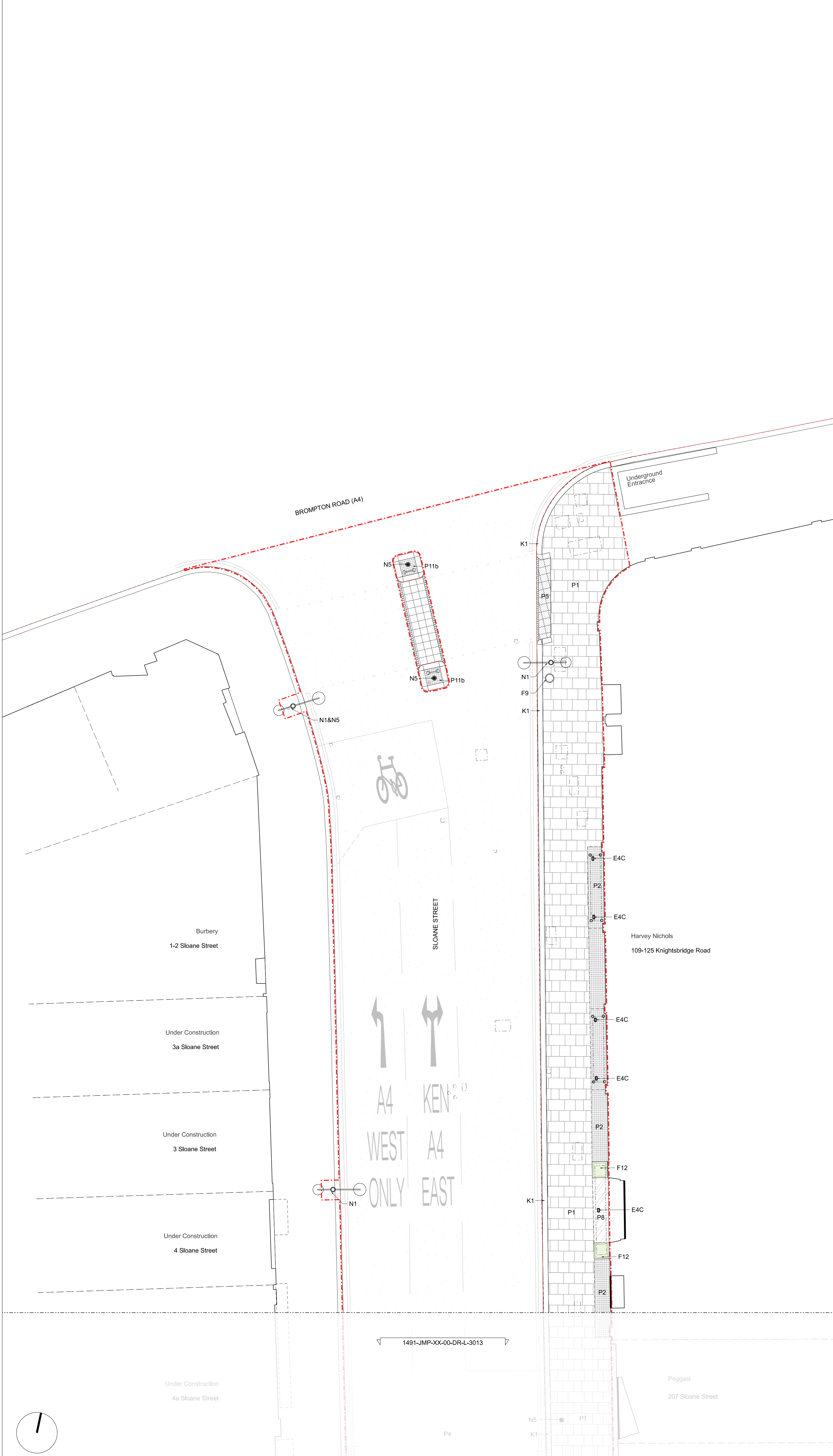


JOHN MCASLAN + PARTNERS
 7-9 William Road
 London NW1 3ER
 T +44 (0)20 7313 6000
 F +44 (0)20 7313 6001
 www.mcaslan.co.uk

Architect
 Landscape

SLOANE STREET PUBLIC REALM
General Arrangement Plan 15

Scale A1 at: 1:100 @ A1 Job Number: 1491
 Date: 25/06/2021 Drawing: DO
 Drawing Status: S5 Checked: KB
 Drawing Number: 1491-JMP-XX-00-DR-L-3014 Revision: C02



1491-JMP-XX-00-DR-L-3013