

Project Logo

Notes

1. Refer to WSP consultants drawings for highway street furniture, visibility splays, parking restrictions, drainage layout and other engineering details.
2. Refer to LAPD consultants drawings for street lighting strategy.
3. Refer to ASD consultants drawings for planting design drawings.
4. Do not scale from this drawing.
5. All dimensions are to be checked on site and any discrepancies noted in writing to the Project Manager.
6. All dimensions are in millimeters unless noted otherwise.

Rev.	Date	Description	Drawn	Checked
C01	14/10/2022	STAGE 5: FOR CONSTRUCTION	DO	KB
C02	19/12/2022	STAGE 5: FOR CONSTRUCTION	DO	KB
C03	31/03/2023	STAGE 5: FOR CONSTRUCTION	DO	KB

KEY

- Site boundary
- Scope delivered outside main works
- Scope awaiting further input
- Early work
- Existing kerb line
- Doors/Steps

SURFACES

	REFER TO
P1 - Yorkstone flags Type 1 - 63mm	Plan: DRN-1100 to DRN-1216 Dist: DRN-4000 to DRN-4216 Dist: DRN-4216 to DRN-4400
P2 - Yorkstone tiles	Plan: DRN-1100 to DRN-1216 Dist: DRN-4000 to DRN-4216
P3 - Granite setts	Plan: DRN-1100 to DRN-1216 Dist: DRN-4000 to DRN-4216
P4 - Vehicular grade asphalt	WSP Drawings
P5 - Tactile paving	Plan: DRN-1100 to DRN-1216 Dist: DRN-4000 to DRN-4216
P6 - Granite setts	Plan: DRN-1100 to DRN-1216 Dist: DRN-4000 to DRN-4216
P7 - Yorkstone flags Type 2 - 25mm	Plan: DRN-1100 to DRN-1216 Dist: DRN-4000 to DRN-4216
P8 - Luxcrete finish to be retained	Plan: DRN-1100 to DRN-1216
P10 - Resin bound gravel	Plan: DRN-1100 to DRN-1216 Dist: DRN-4000 to DRN-4216 Dist: DRN-4216 to DRN-4400
P11a - Yorkstone setts	
P11b - Yorkstone setts - tumbled	
P12 - Loose gravel	
K1 - Granite kerb type 1	Plan: DRN-1100 to DRN-1216 WSP Drawings to detail
K2 - Granite kerb type 2	Plan: DRN-1100 to DRN-1216 WSP Drawings to detail
K3 - Special granite kerbs (sizes vary)	Plan: DRN-1100 to DRN-1216 Dist: DRN-4000 to DRN-4216
Road Markings	WSP Drawings

FURNITURE

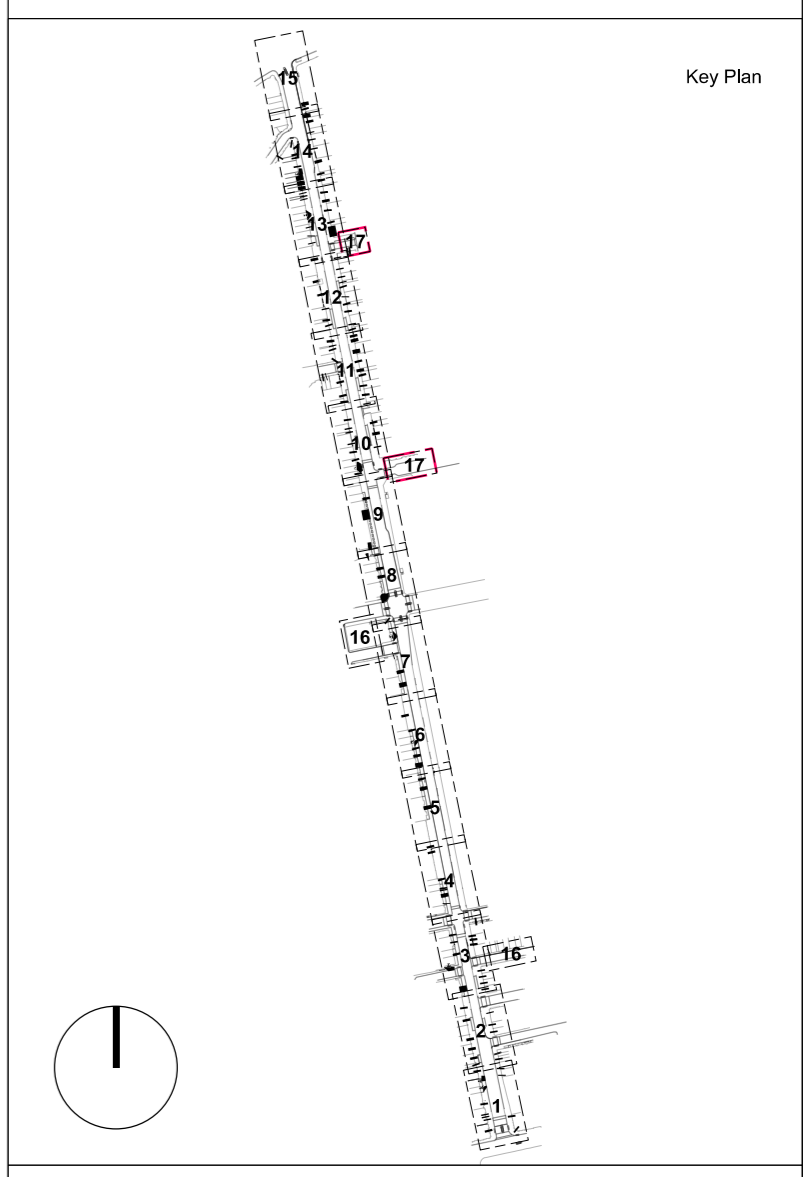
	REFER TO
F1 - Granite planter with integrated seating Types 1,2,4,5,6,7,8,9,10	Plan: DRN-1100 to DRN-1216 Dist: DRN-4000 to DRN-4216 Dist: DRN-4216 to DRN-4400
F2 - Granite planter Type 3	Plan: DRN-1100 to DRN-1216 Dist: DRN-4000 to DRN-4216
F3A and F3B - Retained cabinets	WSP Drawings
F4 - Restored telephone box	WSP Drawings
F5 - Retained bus shelter	WSP Drawings
F6 - Bike stands	Plan: DRN-1100 to DRN-1216 Dist: DRN-4000 to DRN-4216
F7 - Retained Post box	Plan: DRN-1100 to DRN-1216 Dist: DRN-4000 to DRN-4216
F8A - Tree pit surround, filled with resin bound gravel - Existing Tree - Setout to be checked on site	Plan: DRN-1100 to DRN-1216 Dist: DRN-4000 to DRN-4216
F8B - Tree pit surround, filled with loose gravel - Proposed Tree	Plan: DRN-1100 to DRN-1216 Dist: DRN-4000 to DRN-4216
F9 - Proposed bins	Plan: DRN-1100 to DRN-1216 Dist: DRN-4000 to DRN-4216
F10 - Drinking fountain (F10a and F10b)	Plan: DRN-1100 to DRN-1216 Dist: DRN-4000 to DRN-4216
F11 - Existing BT Inlink unit to be reinstated	Plan: DRN-1100 to DRN-1216 Dist: DRN-4000 to DRN-4216
F12 - Proposed Pots positioned above Paving	Plan: DRN-1100 to DRN-1216 Dist: DRN-4000 to DRN-4216
F13 - Legible London Refurbished & Reinstated	Plan: DRN-1100 to DRN-1216
F14 - Historic Bollards Refurbished & Reinstated	Plan: DRN-1100 to DRN-1216
F15 - Bell Bollard - Refurbished & Reinstated	Plan: DRN-1100 to DRN-1216 Dist: DRN-4000 to DRN-4216
E4A - Demarcation studs - Private/Public Boundary* and Smoke outlets**	Plan: DRN-1100 to DRN-1216 Dist: DRN-4000 to DRN-4216
E4B - Extent of Smoke Outlets Panels	Plan: DRN-1100 to DRN-1216 Dist: DRN-4000 to DRN-4216
E4C - Bronze Smoke Vent Plaque	Plan: DRN-1100 to DRN-1216 Dist: DRN-4000 to DRN-4216
E5 - Coal Hole Lid Refurbished & Reinstated	Plan: DRN-1100 to DRN-1216 Dist: DRN-4000 to DRN-4216
Proposed road signage	WSP Drawings
Proposed hoops	WSP Drawings
Access covers / Road gully / Proposed gully / catch pit	WSP Drawings

SOFT LANDSCAPE

	REFER TO
V1 - Ornamental planting and hedges	ASD Drawings Dist: DRN-4000 to DRN-4216 Dist: DRN-4216 to DRN-4400
T1 - Existing tree	Plan: DRN-1100 to DRN-1216 ASD Drawings
T2 - Proposed single stem tree	ASD Drawings
T2A - Proposed single stem tree (smaller size)	ASD Drawings
T3 - Proposed multi stem tree	ASD Drawings
T4 - Proposed multi stem tree	ASD Drawings

LIGHTING

	REFER TO
N1 - Column luminaire	LAPD Drawings Dist: DRN-4000 to DRN-4216
N2 and N4 - Column luminaire with belisha beacon	LAPD Drawings Dist: DRN-4000 to DRN-4216
N3 - Existing lighting column to be retained	LAPD Drawings
N5 - Traffic light	WSP Drawings
S - In-ground luminaire	LAPD Drawings



JOHN MCASLAN + PARTNERS

7-9 William Road
London NW1 3ER
T +44 (0)20 7313 6000
F +44 (0)20 7313 6001
www.mcaslan.co.uk

Architect
Landscape

SLOANE STREET PUBLIC REALM

General Arrangement Plan 17

Scale A1 A1: 1:100 @ A1 Job Number: 1491
Date: 25/06/2021 Drawing: DO
Drawing Status: S5 Checked: KB
Drawing Number: 1491-JMP-XX-00-DR-L-3016 Revision: C03